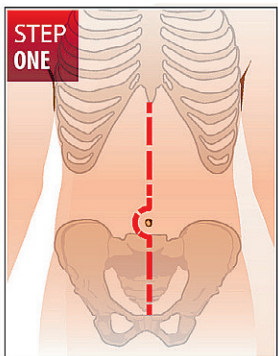


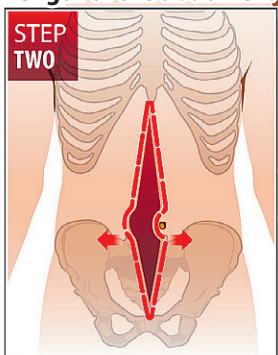
HOW IT WORKS – CYTOREDUCTIVE SURGERY & HYPERTHERMIC INTRAPERITONEAL CHEMOTHERAPY (HIPEC)

STEP ONE



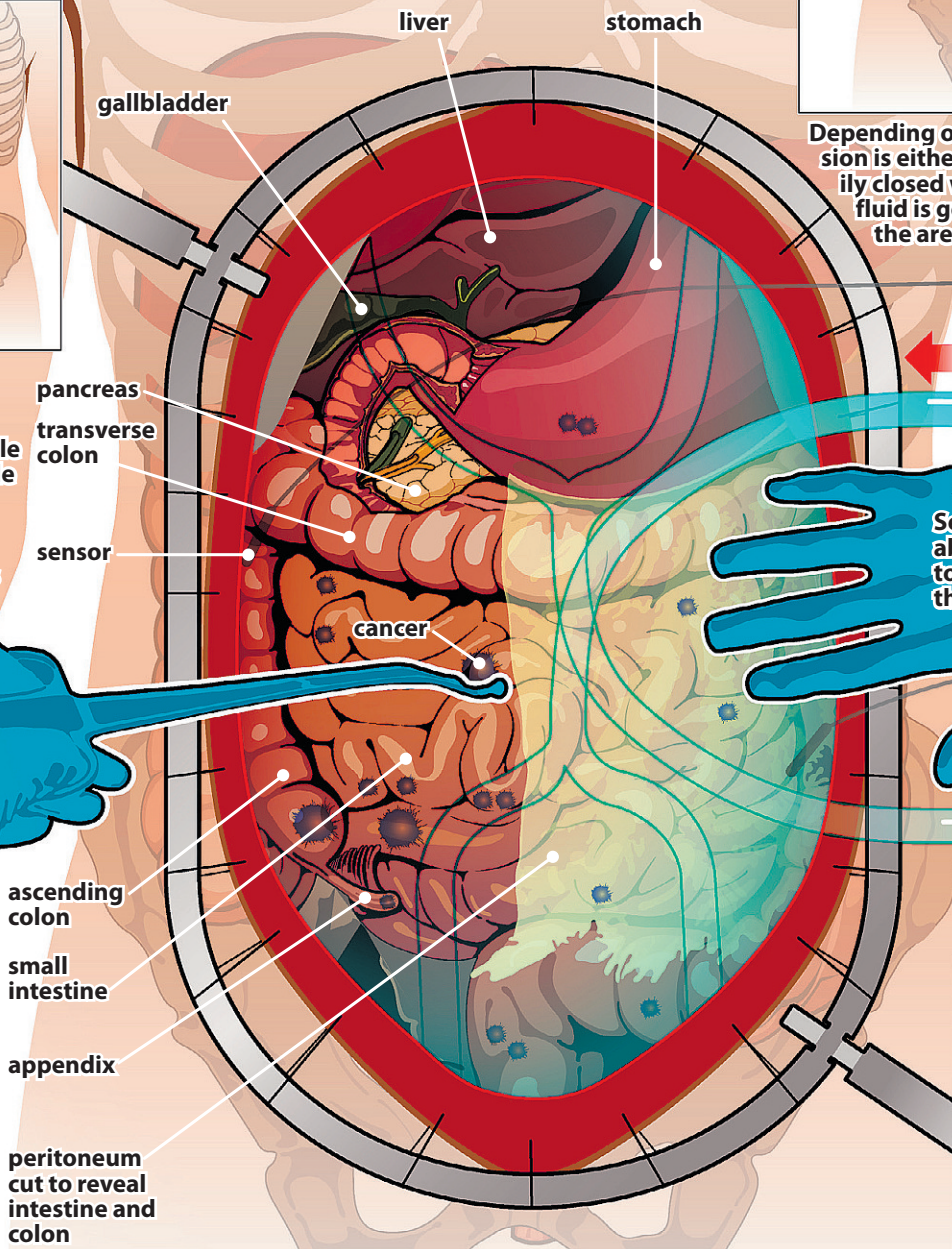
Surgeons start by making an incision the length of the abdomen.

STEP TWO



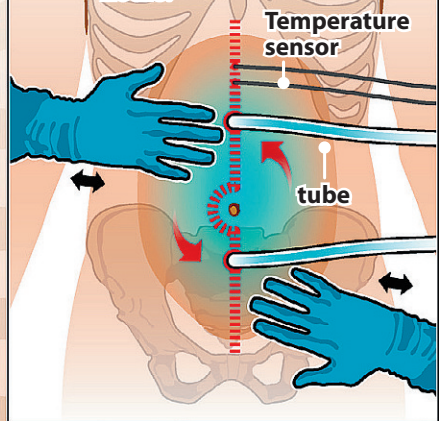
STEP THREE

The skin and muscle are held open while surgeons cut out all visible cancer tumours on the surfaces of organs (cytoreductive surgery).



STEP FOUR

A heated chemotherapy solution is pumped inside the abdominal cavity and circulated for one or two hours.



Depending on the surgeon, the incision is either left open or temporarily closed while the chemotherapy fluid is gently moved throughout the area.

Heated chemotherapy solution introduced into abdomen

Sensors are placed on the abdominal wall to monitor the temperature of the solution.

Solution is drained through second tube

Chemo bath is pumped out, the patient's incision is stitched and stapled shut.

STEP FIVE

